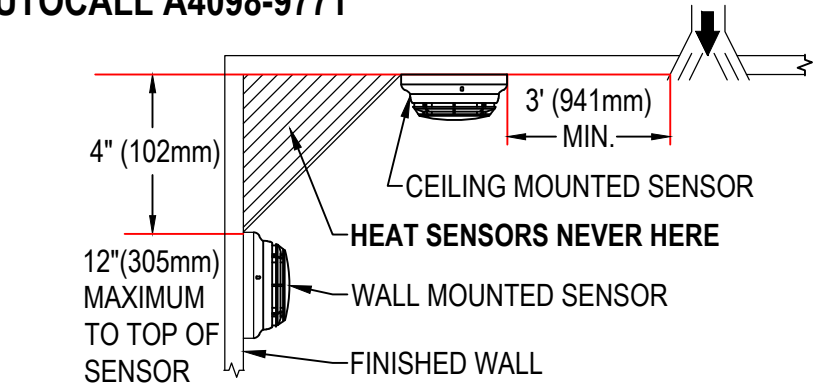
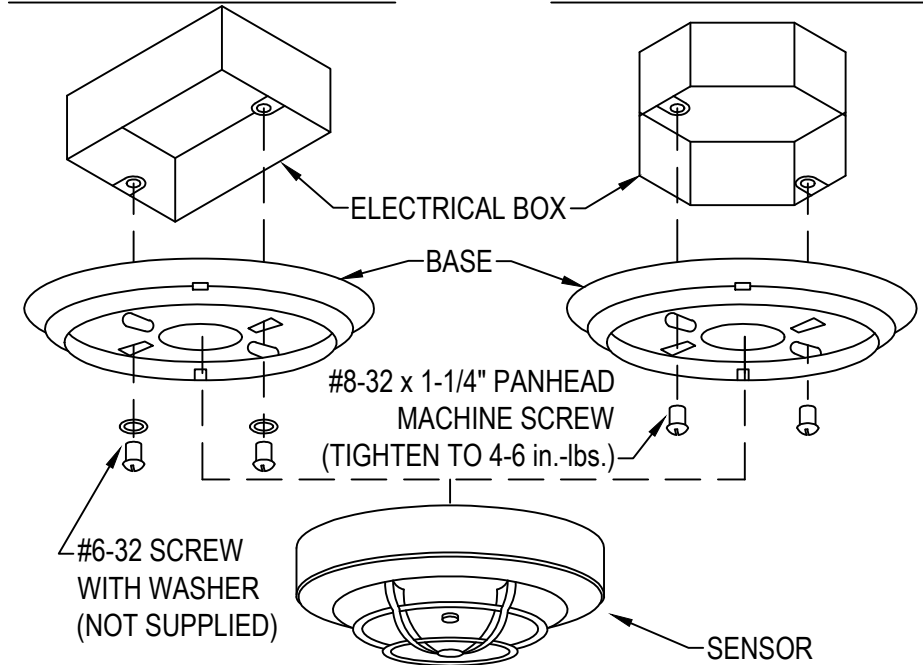


# CO SENSOR BASE WITH SOUNDER

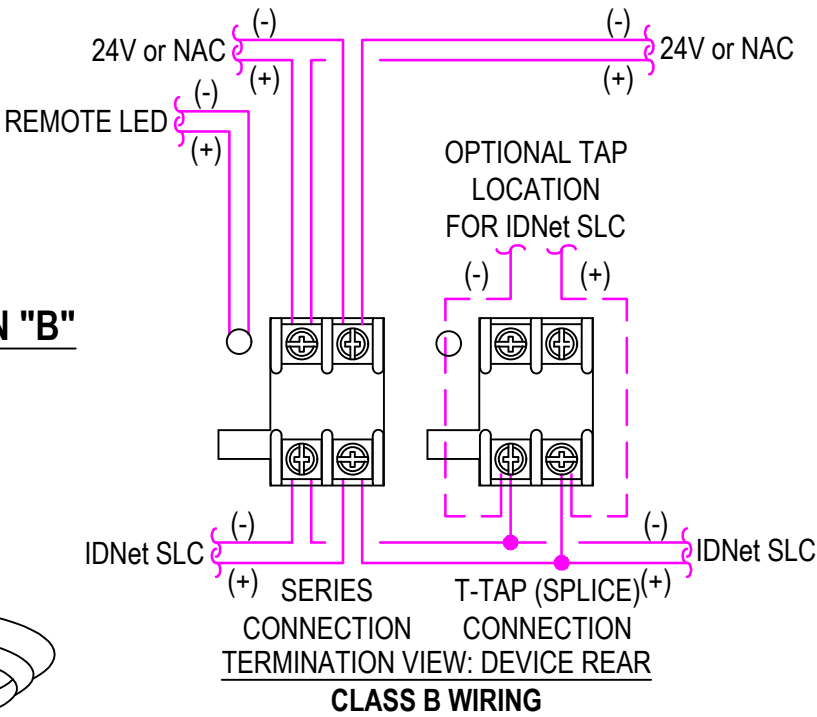
AUTOCALL A4098-9771



## MOUNTING OPTION "A"



## MOUNTING OPTION "B"



## WIRING NOTES

1. MAINTAIN CORRECT POLARITY ON TERMINAL CONNECTIONS.
2. ALWAYS CUT CONDUCTORS AND SECURE UNDER TERMINALS. NEVER LOOP WIRES UNDER TERMINALS.
3. ANY WIRE SPLICES TO BE MADE BY LISTED AND AHJ APPROVED METHODS.

## MOUNTING OPTIONS

OPTION <sup>1</sup>	DESCRIPTION	NOTE
A	SINGLE GANG BOX, 2-1/8" (54mm) DEEP - FLUSH MOUNT	BY OTHERS
B	4" (102mm) OCTAGONAL BOX, 1-1/2" (38mm) DEEP, MINIMUM - FLUSH MOUNT	BY OTHERS
C	4" (102mm) SQUARE BOX, 1-1/2" DEEP (MIN) W/ AUTOCALL A4098-9832 ADAPTER KIT	BOX BY OTHERS, A4098-9832 ORDERED SEPARATELY
D	4" (102mm) SQUARE BOX, 1-1/2" DEEP (MIN) W/ SINGLE GANG COVER PLATE 3/4" (19mm) EXTENSION	BY OTHERS

1. FOR ADDITIONAL MOUNTING OPTIONS, DOWNLOAD DATA SHEET A4098-0052 FROM [HTTP://WWW.AUTOCALL.COM](http://www.autocall.com)



Owner

Project Name

No.	Description	Date
01	For Review	07/14/2021

Autocall\_A4098 Addressable Bases Detector  
A4098-9771

Project number		01
Date	07/12/2021	
Drawn by	CV	
Checked by	MA	
Scale	NTS	